

# 26<sup>th</sup> World Gas Conference

1 – 5 June 2015, Paris, France



Life Cycle Assessment as a Decision Support Tool within ENGIE  
and the French Gas Association

Hervé CASTERMAN  
Environment Director  
ENGIE



# The Environment is Impacted by ENGIE's Activity ENGIE's Activity is Impacted by the Environment

## Local and Global Environment

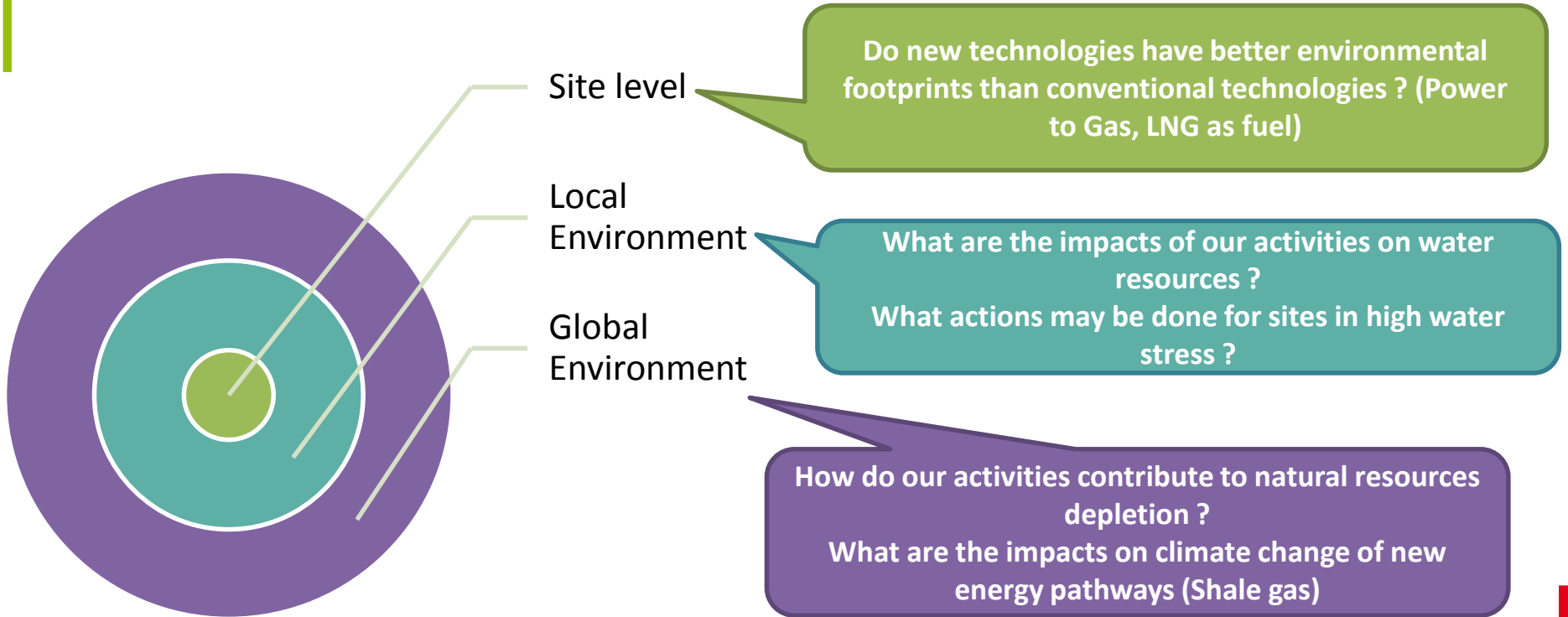


Air, water, soil, resources,  
stakeholders

**Accounting for impacts** on and of the environment implies  
to **modify strategies**

→ There is a **need for adapted relevant tools** to assess  
such impacts

# Evolution of technologies and environmental concerns calls for new methodological developments



# All ENGIE BUs and Corporate Functions need support to assess their interactions with the environment

Strategy &  
Corporate Policy

Research &  
Development

Business  
development

Marketing

Operations

Communication  
& Reporting

LCA can answer several  
needs at different levels of  
ENGIE



Benchmark

Assess technological building blocks

Identify best practices

Anticipate potential environmental  
issues

Monitor environmental  
performances of ENGIE

Communicate with internal and  
external stakeholders

**LCA :**  
a relevant **multicriteria method** to assess environmental impacts of a product or a service **along its whole life cycle**

- Several methods exist that are used to assess interactions between ENGIE's activities and their environment.
- LCA is one of the **most internationally recognized** and is still evolving to take into account new environmental concerns and issues related to new technologies.

# LCA is used as a Decision Support Tool by the Group for 4 main Purposes

## 1. Design & Operate

R&D projects...

## 2. Anticipate & Manage

Optimization of operation and new activities...

## 3. Benchmark & Lobbying

Comparison of technologies, fuels to help legislators...

## 4. Design of new offers

Added value in offers...

## LCA is a relevant tool to support the natural gas industry towards lower environmental impacts

- LCA can be used to **identify** which actions are needed and which are most relevant.
- LCA can be used to **quantify** the environmental efficiency of **action plans**.



# Contribution of the gas industry to fight against climate change and for sustainable development

**9 actions** identified for voluntary initiatives

1. Reduce the GHG emissions linked to the natural gas transmission network
2. Reduce the emissions of LNG terminals
3. Assess the option of CCS and associated development means
4. Help developing new efficient technologies highlighting environmental & energetic performances of natural gas
5. Encourage the electricity producers to substitute coal by natural gas for electricity generation
6. Develop natural gas as an alternative fuel
7. Develop waste and biomass methanisation together with local stakeholders and the agricultural sector
8. Encourage the development of Power to Gas
9. Promote the development of « clean cooking equipments for all » using butane, propane or biogas from micro-methanisation

LCA supported the formulation of this initiative